

投光灯具系列 TG115B Projector luminaire series

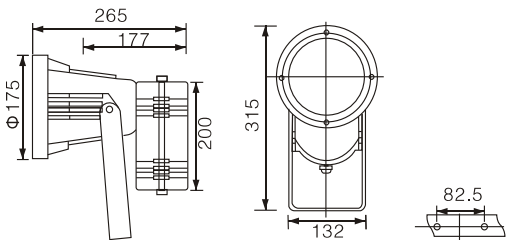
产品特点 Material & Characteristic

- 产品外壳为优质压铸铝底壳。
- 灯具电器一体化设计，安装维护方便。
- 5mm厚钢化玻璃，耐高温、抗冲击。
- 产品电气绝缘等级：I级。
- 优质硅橡胶密封圈，耐高温、耐老化。
- High-quality die-casting aluminum shell as luminaire body.
- Integration of electrical parts and luminaire design, easy installation and convenient maintenance.
- 5mm thick tempered glass, high temperature resistance and impact resistance.
- Electrical insulation protection: Grade I level.
- High-quality silicone rubber seals, high temperature, anti-aging.

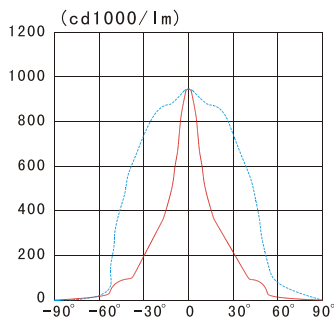
应用范围 Applications

- 建筑物、体育场、广场、码头、绿化照明、广告、大厦外景、车站、铁路、隧道、港口等户外照明。
- Buildings, stadiums, squares, docks, green lighting, advertising, building outlines, stations, railways, tunnels, ports and other outdoor lighting.

产品尺寸 size



配光曲线 Luminous intensity curve



技术参数 Product Parameter

IP65

型号 Model	光源/灯功率 lamp	灯头 Base	电压/频率 Voltage & frequency
HQBN-70L/TG115B	PAR30 70W	E27	220V/50Hz
HQBN-70L/TG115B	G12 70W	G12	220V/50Hz
HQBN-150L/TG115B	G12 150W	G12	220V/50Hz