

## 投光灯具系列 TG106 Projector luminaire series

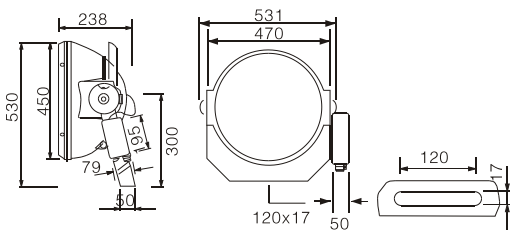
### 产品特点 Material & Characteristic

- 浇注铝合金成型联体电器箱。
- 专为窄光束,中光束设计的阳极氧化铝反射器。
- 内置遮光板,使投光光束集中,提高光线利用效率,并有效防止眩光和光污染。
- 灯具侧边有刻度,方便调整照射角度。
- 背后开启式更换灯泡,方便维护。
- 较高的防水,防尘等级。
- Casting molding aluminum alloy electrical box conjoined.
- For narrow-beam, medium-beam design in anodized aluminum reflector.
- Built-in shading plate so that the vote-ray beam focused on to improve the light use efficiency, and effectively prevent glare and light pollution.
- Lamps have scale the side to facilitate the adjustment angle.
- Replacement of light bulbs behind the open-style to facilitate maintenance.
- Higher water-proof and dust-proof grade.

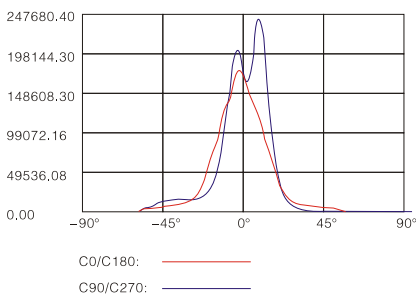
### 应用范围 Applications

- 建筑物、体育场、广场、码头、绿化照明、广告、大厦外景、车站、铁路、隧道、港口等户外照明。
- Buildings, stadiums, squares, docks, green lighting, advertising, building outlines, stations, railways, tunnels, ports and other outdoor lighting.

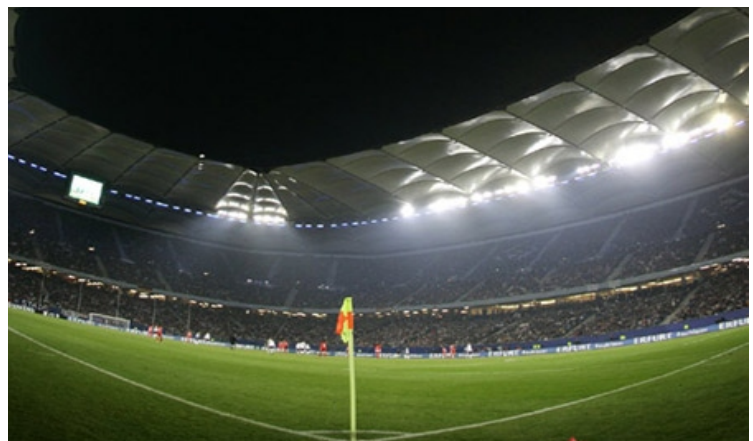
### 产品尺寸 size



### 配光曲线 Luminous intensity cure



建议配套我司电器箱-K箱  
It is recommended to use  
Huaquan gear box model no.  
HQBXXL-K



### 技术参数 Product Parameter

IP65

型号 Model	光源/灯功率 Lamp	灯头 Base	电压/频率 Voltage & frequency
HQBN-1000L/TG106	MH 1000W	X528	220V/50Hz