

投光灯具系列 TG104 Projector luminaire series

产品特点 Material & Characteristic

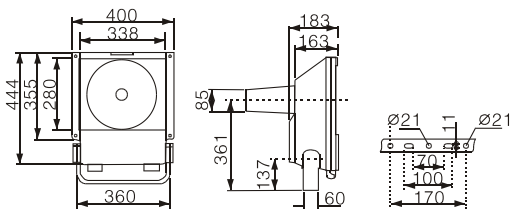
- 高压压铸成型外壳，外部静电喷塑处理。
- 专为窄光束设计的阳极氧化铝反射器。
- 通过前部搭扣可便利地更换灯泡。
- High pressure die-casting aluminum shaped outer shell, spraying plastics surface by electrostatic method.
- Oxidized aluminum reflector in positive pole, which is designed for narrow light beam.
- Exchange the bulb easily via front buckle.

应用范围 Applications

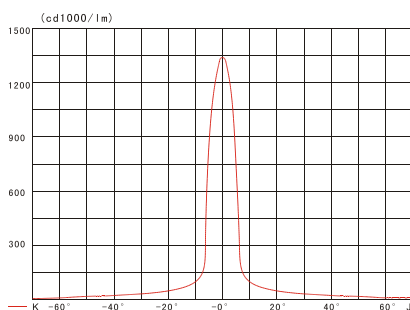
- 建筑物、体育场、广场、码头、绿化照明、广告、大厦外景、车站、铁路、隧道、港口等户外照明。
- Buildings, stadiums, squares, docks, green lighting, advertising, building outlines, stations, railways, tunnels, ports and other outdoor lighting.



产品尺寸 size



配光曲线 Luminous intensity curve



技术参数 Product Parameter

IP
65

| 型号 Model | 光源/灯功率 lamp | 灯头 Base | 电压/频率 Voltage & frequency |
|-----------------|----------------|------------|------------------------------|
| HQBN-250L/TG104 | HPS 250W | E40 | 220V/50Hz |
| HQBN-400L/TG104 | HPS 400W | E40 | 220V/50Hz |
| HQBG-250L/TG104 | MH 250W | E40 | 220V/50Hz |
| HQBG-400L/TG104 | MH 400W | E40 | 220V/50Hz |