

泛光灯具系列 FG24 Floodlighting luminaire series

产品特点 Material & Characteristic

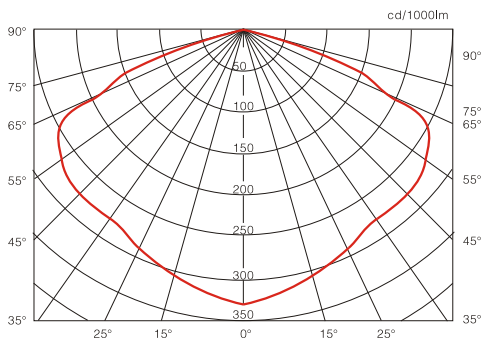
- 采用高光效、长寿命气体放电灯作电光源，选用进口高纯铝阳极氧化材料做反射镜并通过精确配光设计，功率因数 ≥ 0.90 ，反光效率高，透光性好，节能环保。
- 优质铝压铸成型灯体，灯具与电器箱一体化设计，美观大方，安装，维护方便。
- 采用可回收轻质合金环保材料和高科技喷涂技术，防尘防水，耐腐蚀锈，可在高温潮湿和腐蚀性等恶劣环境中长期使用。
- 良好的电磁兼容性，不会对输入电网造成干扰。
- 5mm厚防眩钢化玻璃，达到防眩光效果，能有效减少对在场人员眼睛的刺激，避免产生不适和疲劳感。可选择对称、非对称配光。
- 多种安装方式，适应不同工作现场的照明需求。
- High luminous efficiency and long-life discharge lamps as the light source. Imported high-purity aluminum anodizing materials as reflector and precise optical design and power factor ≥ 0.90 , high efficiency reflection, good light transmission, energy saving and environment friendly.
- High-quality aluminum die-casting as the luminaire shell.
- Luminaire and electrical box integration design, elegant appearance, easy installation and convenient maintenance.
- Light weight alloy using recyclable materials and environmental friendly high-tech spray technology, water-proof, dust-proof and rust resistant. Can be used in hot, humid or corrosive and other adverse environment for long-term use.
- Good electromagnetic compatibility and will not interfere with the input grid.
- 5mm thick tempered glass light glare for anti-glare optical effect High-quality pieces of optical glass glare with functions of anti-glare light and anti-ultraviolet that can effectively reduce discomfort and fatigue to eyes of the staff on spot.
- Install a variety of ways to meet the different needs of the scene lighting.



应用范围 Applications

- 建筑物、体育场、广场、码头、绿化照明、广告、大厦外景、车站、铁路、隧道、港口等户外照明。
- Buildings, stadiums, squares, docks, green lighting, advertising, building outlines, stations, railways, tunnels, ports and other outdoor lighting.

配光曲线 Luminous intensity curve

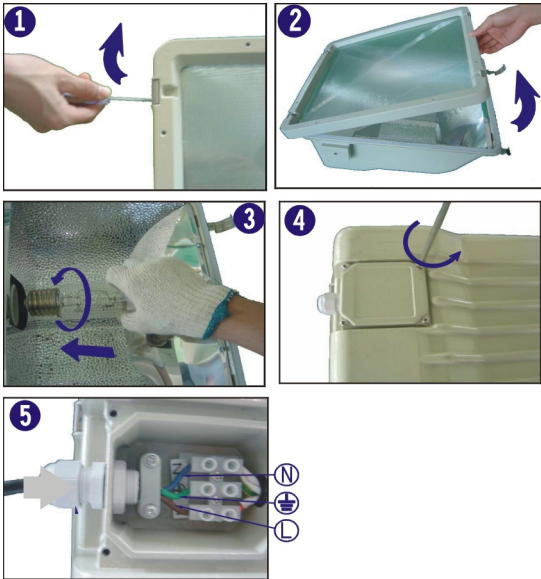


技术参数 Product Parameter

IP65

型号 Model	光源/灯功率 lamp	灯头 Base	电压/频率 Voltage & frequency
HQBG-250L/FG24	MH 250W	E40	220V/50Hz
HQBG-250L/FG24	MH 400W	E40	220V/50Hz

光源安装步骤 Lamp installation steps:



光源安装步骤：

- 步骤一：用小号一字螺丝刀打开灯具四个压扣，如图1所示。
 步骤二：松开灯具压扣后如图2所示向后打开灯具面盖。
 步骤三：按图3所示把光源装入灯座内，注意：安装光源时请先戴上布质手套以保护光源。
 步骤四：用十字螺丝刀松开灯具接线盒的螺丝，打开接线盒的盒盖。
 步骤五：将外部电缆穿过防水接头以及压线码，然后再按接线标示接入接线端子内，电缆接好后拧紧压线码螺丝以及防水接头的锁紧螺帽，然后盖上接线盒盒盖。

Lamp installation steps:

- Step One: Use small screwdriver to open the word with four pressure lamp button, as shown in Figure 1.
 Step Two: Loose the button as shown in Figure 2 and open the cover backwards.
 Step three: As shown in Figure 3, put the light source into the lamp holder. Note: Please wear the cloth gloves to protect the lamp.
 Step four: Use the cross screwdriver to loose screws in lamp wiring box, and open the lid.
 Step Five: Put the external cable through the waterproof connector and through the pressure line code, and then connect to wiring terminals. Screw tight of pressed wire screw and waterproof connector screws of the locking nut and then close the lid of wiring box.

灯具尺寸及安装方式 Luminaire installation:

